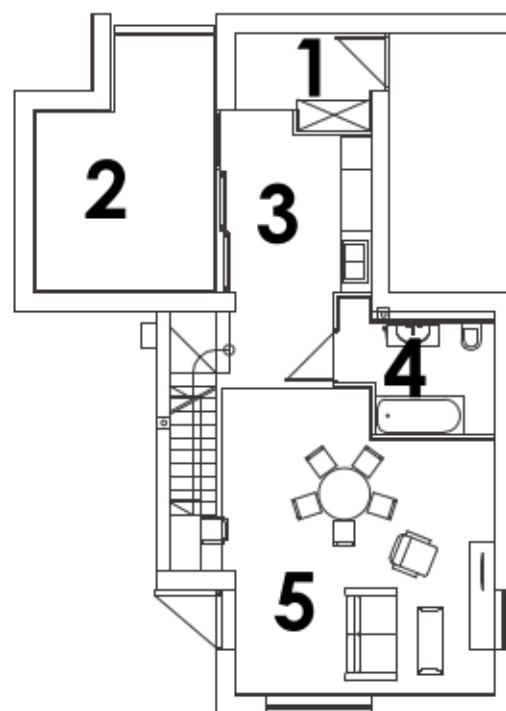
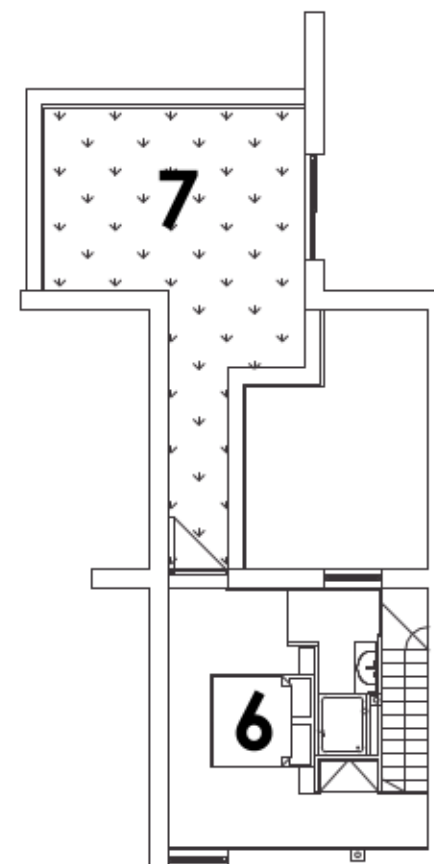


## Apartament nr 26

1 - PRZEDPOKÓJ	4,60m <sup>2</sup>
2 - PATIO	15,23m <sup>2</sup>
3 - KUCHNIA	8,37m <sup>2</sup>
4 - ŁAZIENKA	6,14m <sup>2</sup>
5 - STREFA DZIENNA	37,04m <sup>2</sup>
6 - ANTRESOLA	20,46m <sup>2</sup>
7 - TARAS	26,25m <sup>2</sup>



poziom 1



poziom 2